

NEOBLU BASILE MEN

MEN'S COTTON PIQUÉ SHIRT

NEO
BLU

PEOPLE IN MOTION

03777



PIQUE 190

Long sleeves

Classic collar

Adjustable round cuffs with 2 buttons

7-button placket

Tone-on-tone buttons

Care



Composition

100% combed organic cotton - In conversion

Available colours



Deep black



Night



Optic white

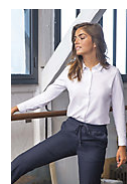
A committed product



AW-APPROVED
VEGAN



Related products



NEOBLU BASILE WOMEN
03791

Available sizes



Sizes	S	M	L	XL	XXL	3XL	4XL
A/B	76/50	77/53	78/56	79/59	80/62	81/66	82/70

Packaging

Carton size : 39 x 31 x 21 cm

Weight per carton : 4.00 kg



Customisation

- **Embroidery** : This technique is generally used for personalisations that aim for a high-end finish. This technique is the most resistant to washing and use. The embroidery can be applied directly to the product or through embroidered patches. It can be done with thickness effects (with foam) or through patches that will then be affixed to the final product, allowing for variations in materials.
- **Flex** : It is the recommended marking technique for small and medium-sized series. There are several aspects: smooth, velvet, fluorescent, glitter, gold and silver. These are iron-on vinyls that are cut and glued by hot pressing. They are very well suited to a wide range of materials and substrates.
- **Digital** : The printing method that knows no limits: precision, colour effects, number of colours... This technique can be used to mark all types of product quantities and is particularly suitable for cotton-based materials.
- **Screen Printing** : The most widely used technique. It consists, by the stencil method, of depositing the ink directly on the product. There are as many screens and passages as there are colours in the motif to be reproduced and all colours can be achieved. This technique makes it possible to produce very large quantities. It allows the use of inks with various effects for very different renderings and is adapted to almost all textile supports. The marking of coloured substrates requires an opacifying undercoat called « background white ».
- **Transfert** : The right technique for all materials. It is recommended for luggage, heavy garments, difficult to access surfaces. It consists of transferring the marking from a paper support to the garment by hot gluing. The marking by gluing brings rigidity to light supports at the level of the marking zone, nevertheless, the product keeps all its qualities of comfort.